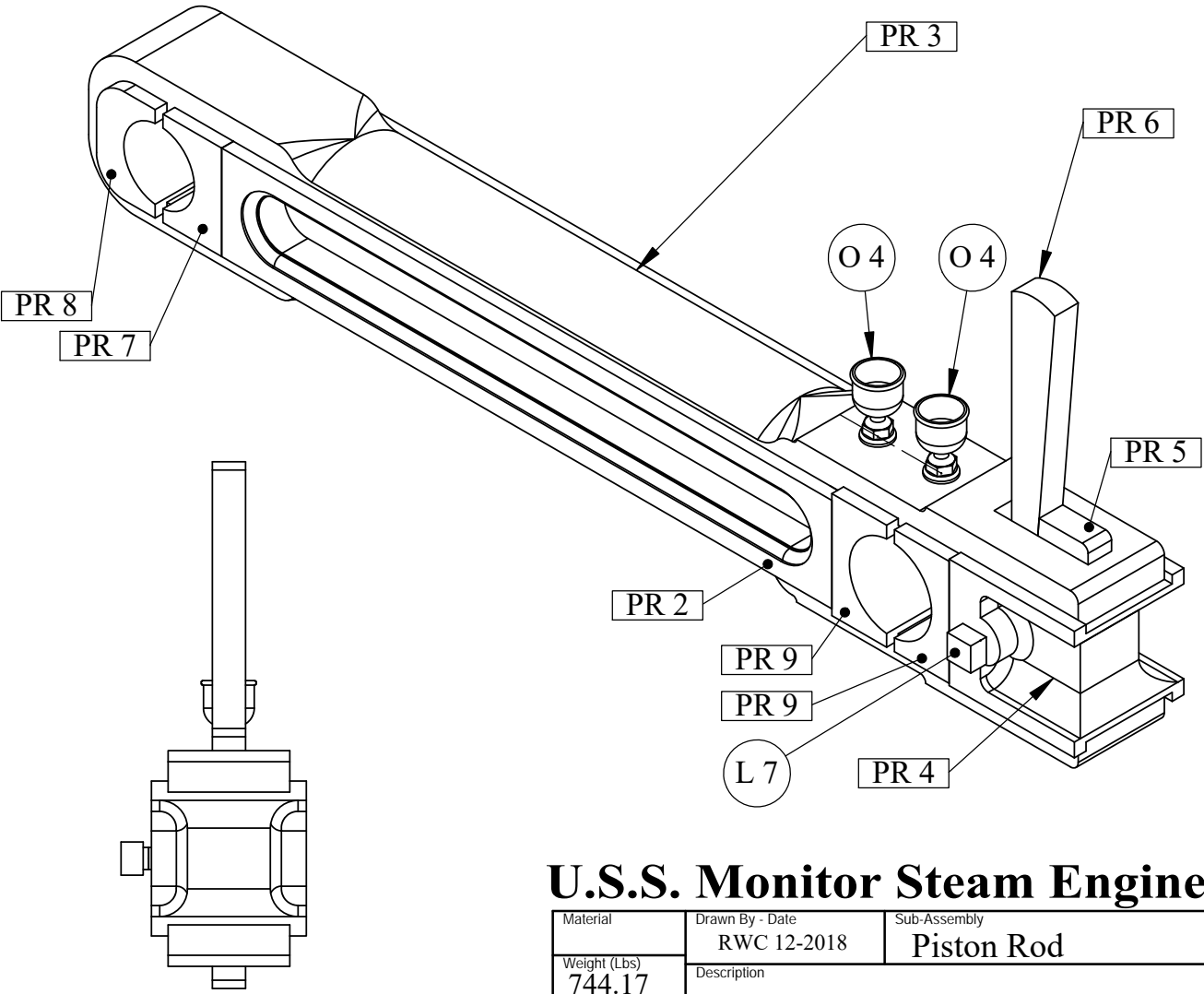


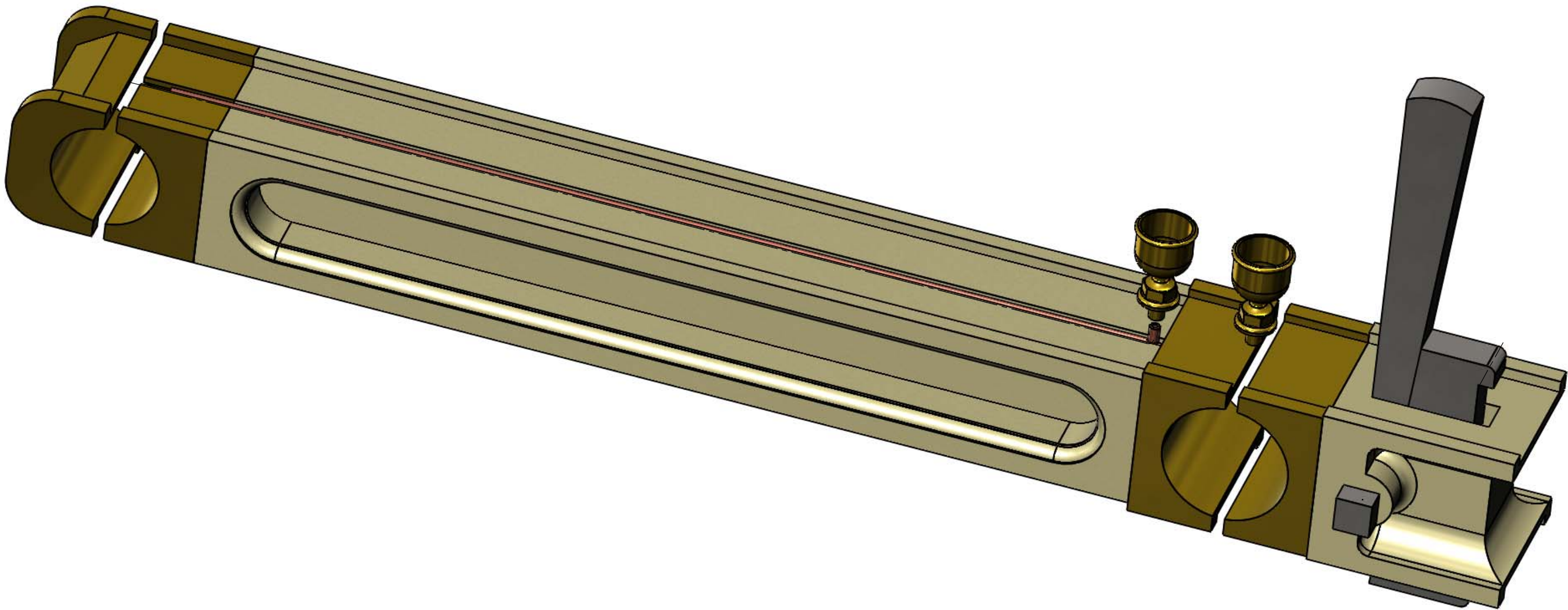
PART NUMBER	DESCRIPTION	QTY.
PR 2	Piston Rod Standard	1
PR 3	Piston Rod Strap	1
PR 4	Piston Rod Gib Block	1
PR 5	Piston Rod Gib	1
PR 6	Piston Rod Cotter	1
PR 7	Piston Rod Wristpin Bearing-A	1
PR 8	Piston Rod Wristpin Bearing-B	1
PR 9	Piston Rod Bearing-Lever End-C	2
PR 10	Piston Rod Oil Line.	1
L 7	Square Locking Screw 1" x 3-1/8"	1
O 4	Oil Cup- Large	2



U.S.S. Monitor Steam Engine

Material	Drawn By - Date	Sub-Assembly
Weight (Lbs) 744.17	RWC 12-2018	Piston Rod
Scale 1:8	Description	
Part # PR 1	Piston Rod Assembly	

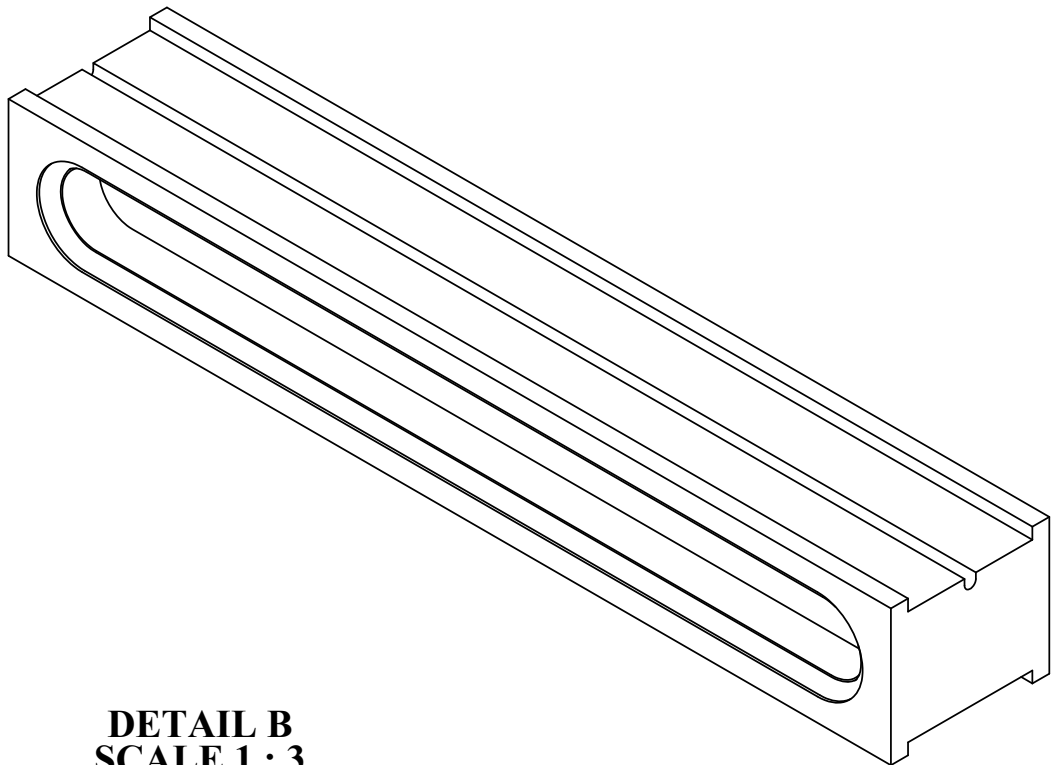
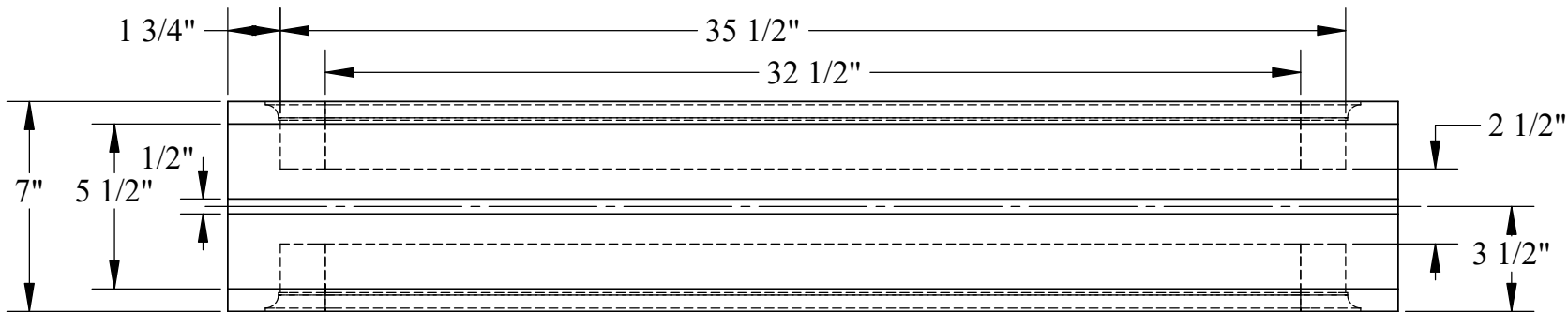
SHEET 1 OF 2



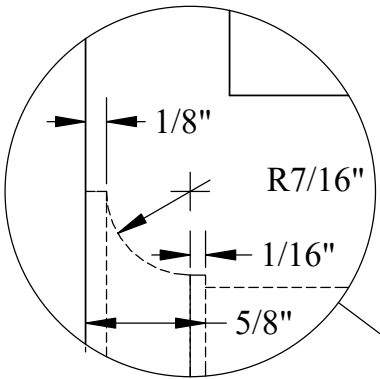
VIEW WITHOUT THE STRAP

U.S.S. Monitor Steam Engine

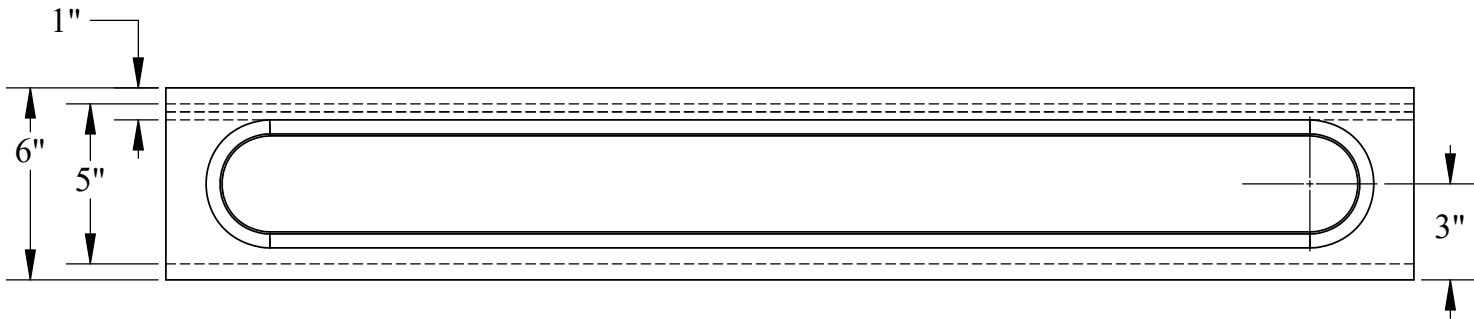
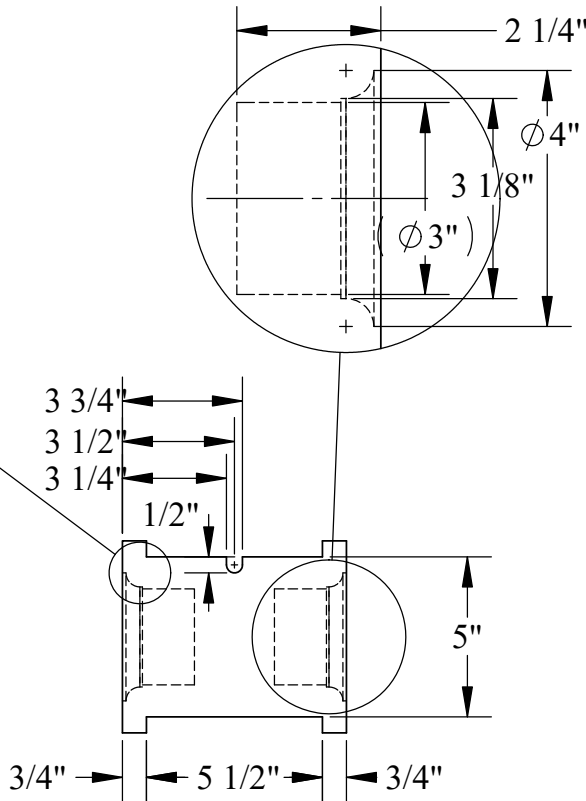
Material Various	Drawn By - Date RWC 10-2018	Sub-Assembly Piston Rod
Weight (Lbs) 424.23	Description Piston Rod Assembly	
Scale 1:4		
Part # PR 1		



DETAIL A
SCALE 1 : 1

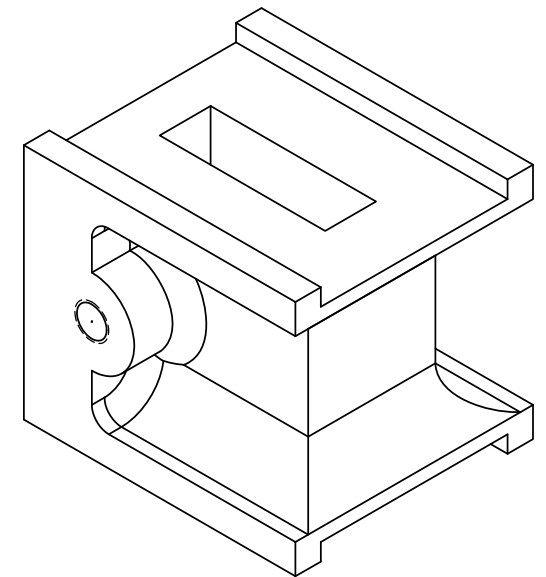
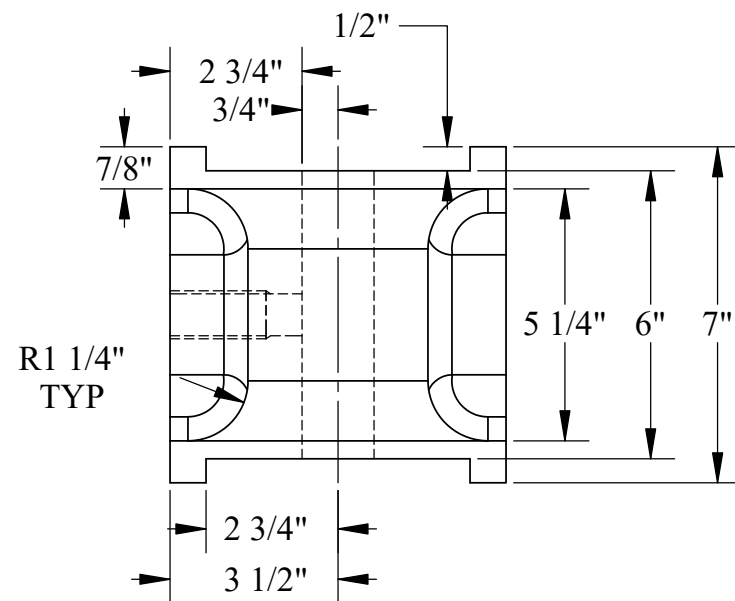
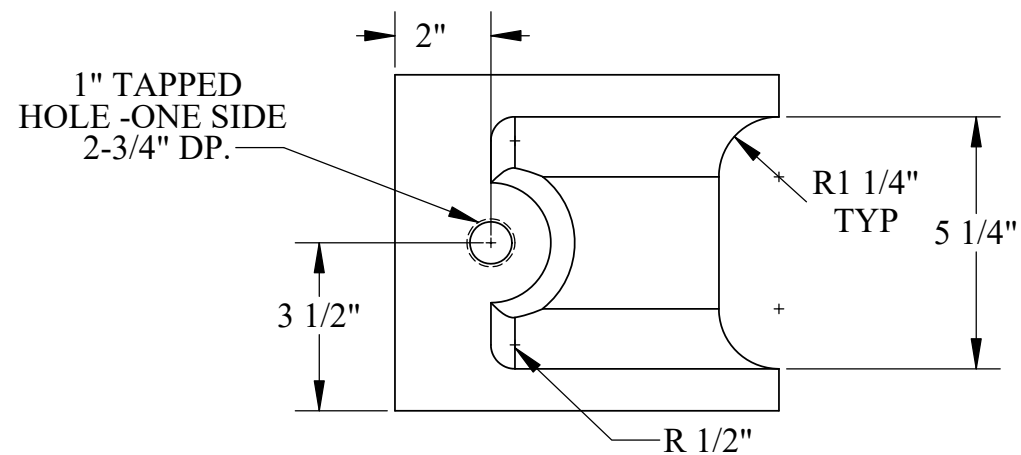
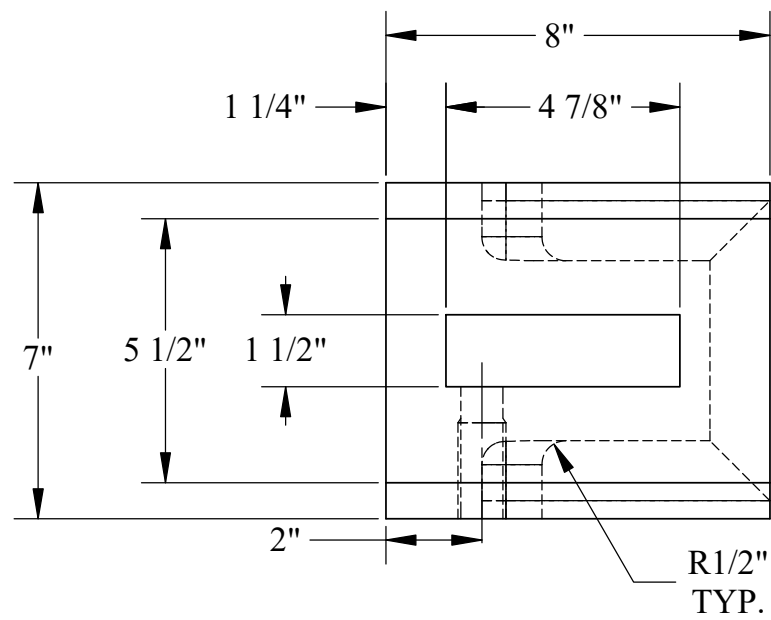


DETAIL B
SCALE 1 : 3



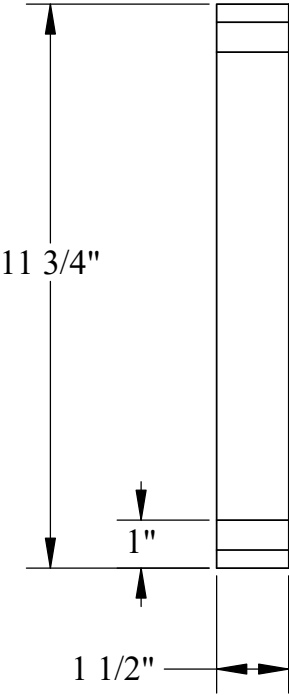
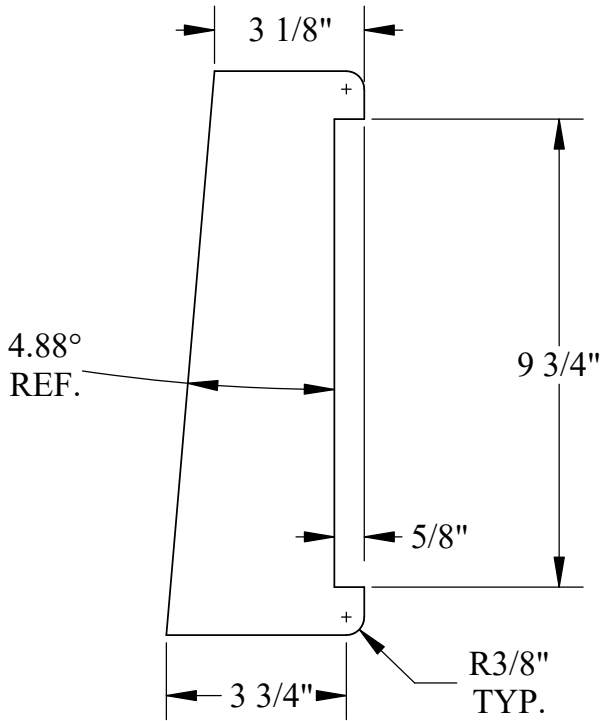
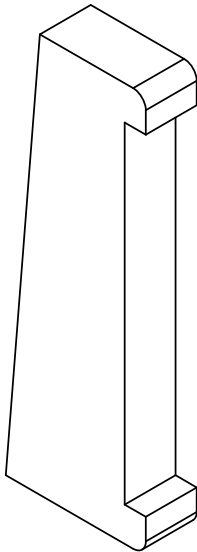
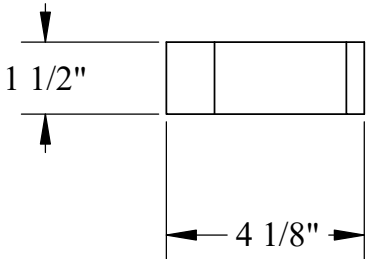
U.S.S. Monitor Steam Engine

Material Cast Iron	Drawn By - Date RWC 10-2018	Sub-Assembly Piston Rod
Weight (Lbs) 240.574	Description Piston Rod Standard	
Scale 1:6		
Part # PR 2		



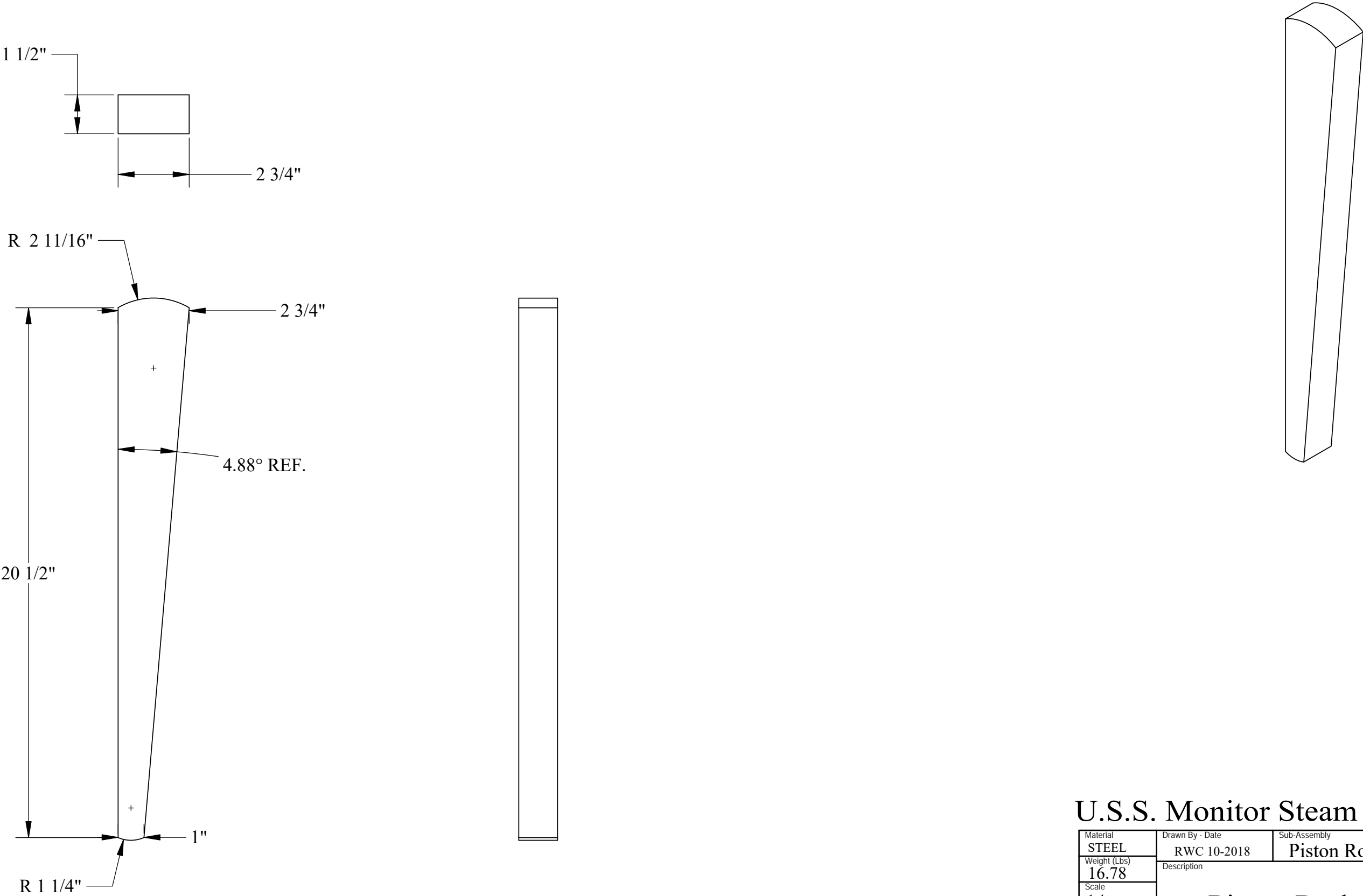
U.S.S. Monitor Steam Engine

Material Cast Iron	Drawn By - Date RWC 10-2018	Sub-Assembly Piston Rod
Weight (Lbs) 50.463	Description Piston Rod Gib Block	
Scale 1:4		
Part # PR 4		



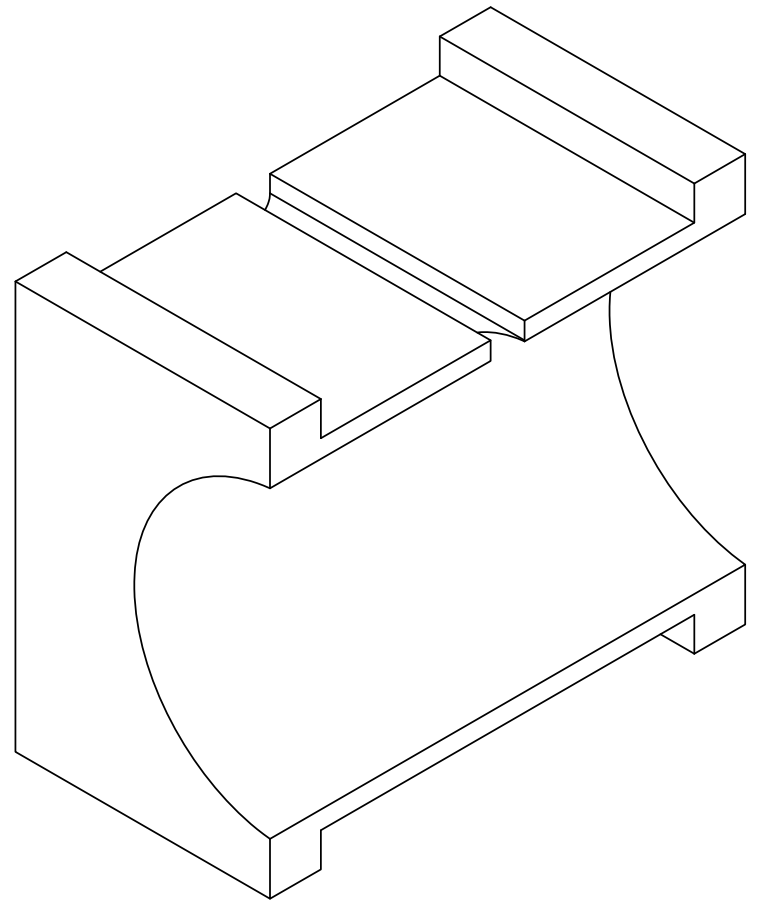
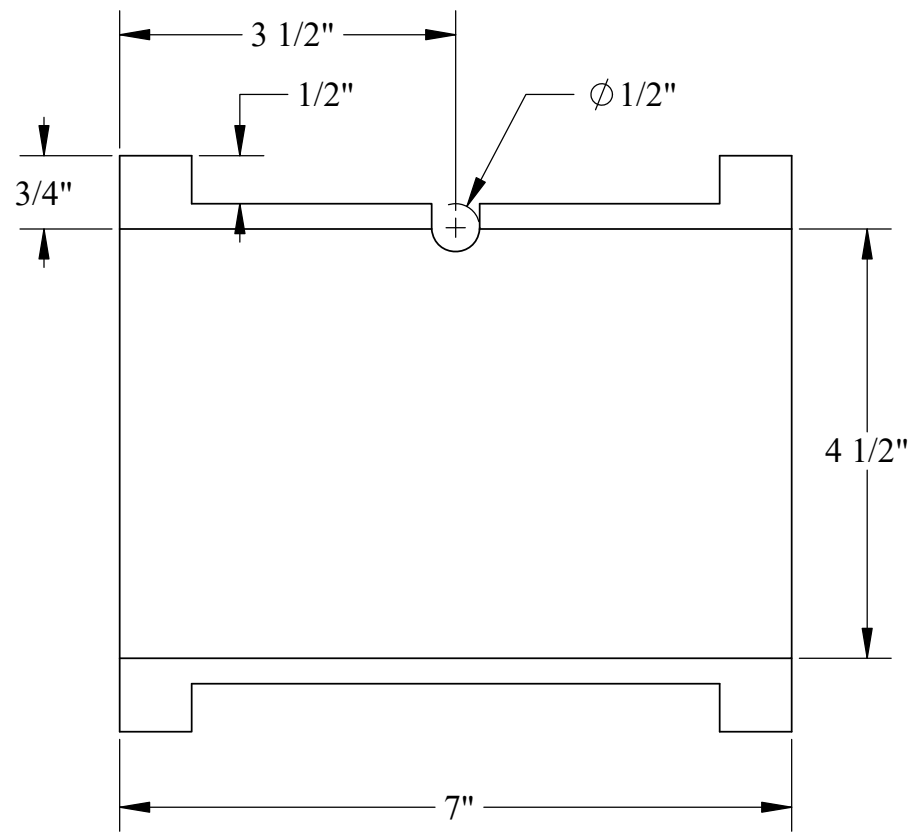
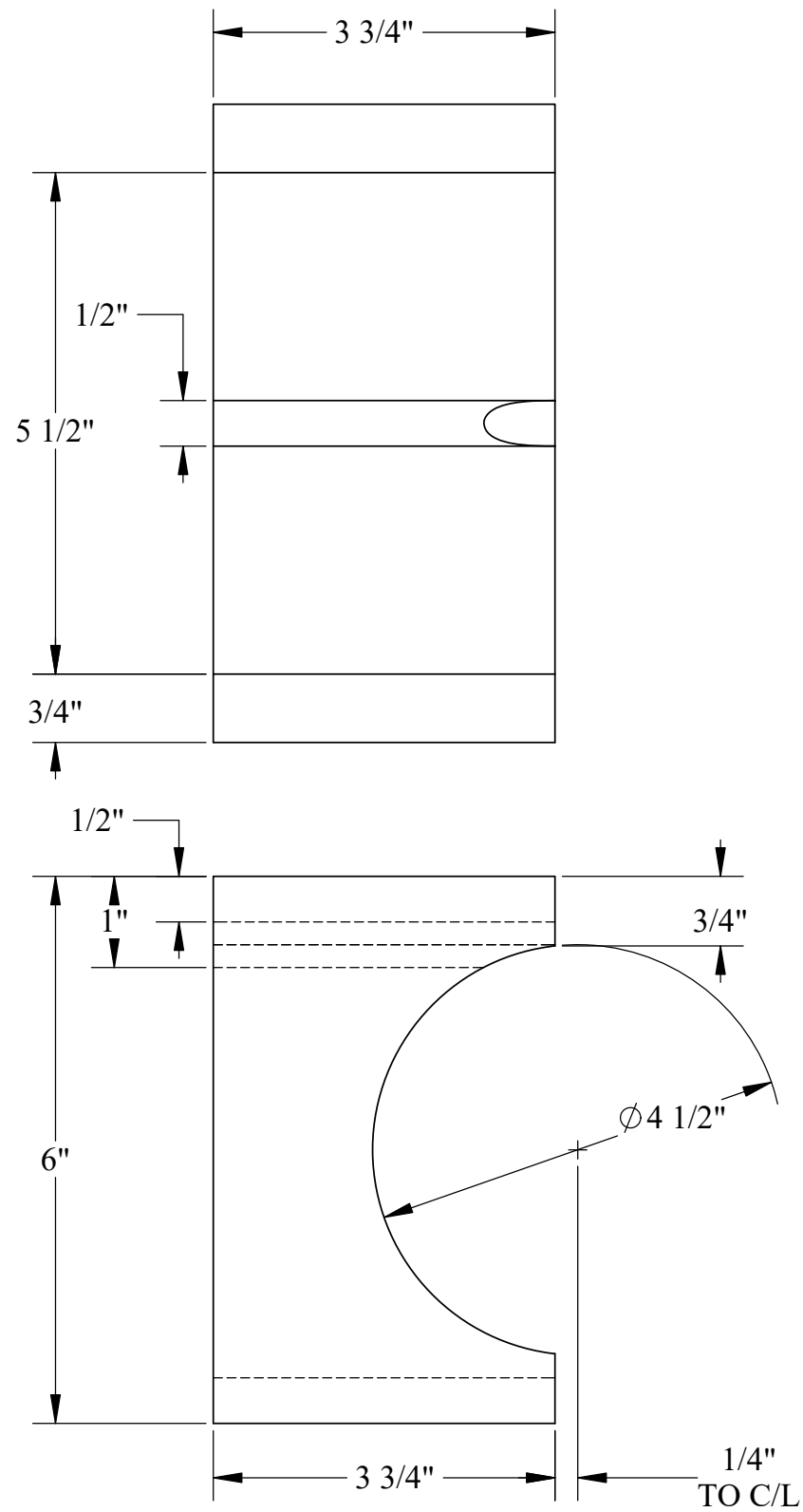
U.S.S. Monitor Steam Engine

Material STEEL	Drawn By - Date RWC 10-2018	Sub-Assembly Piston Rod
Weight (Lbs) 15.59	Description Piston Rod Gib	
Scale 1:4		
Part # PR 5		



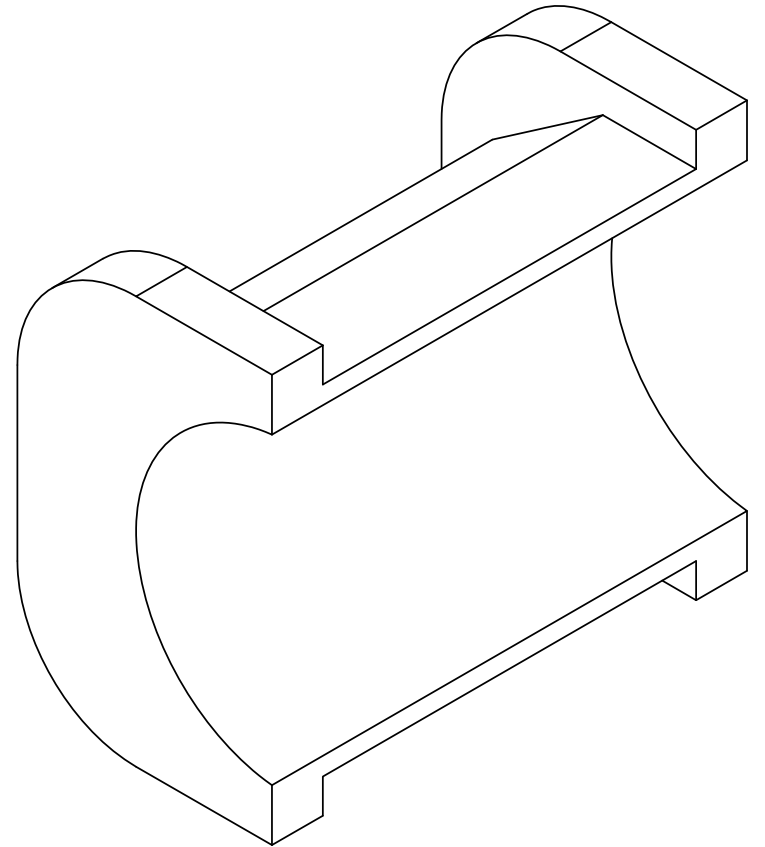
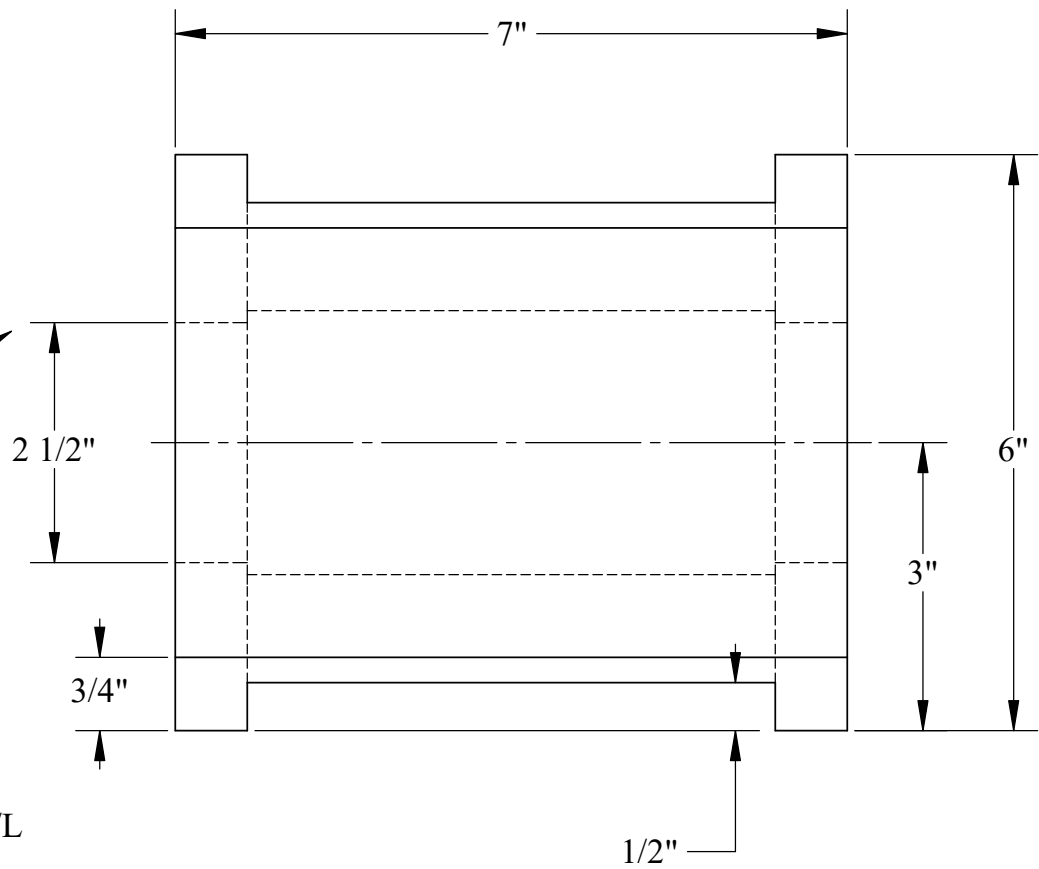
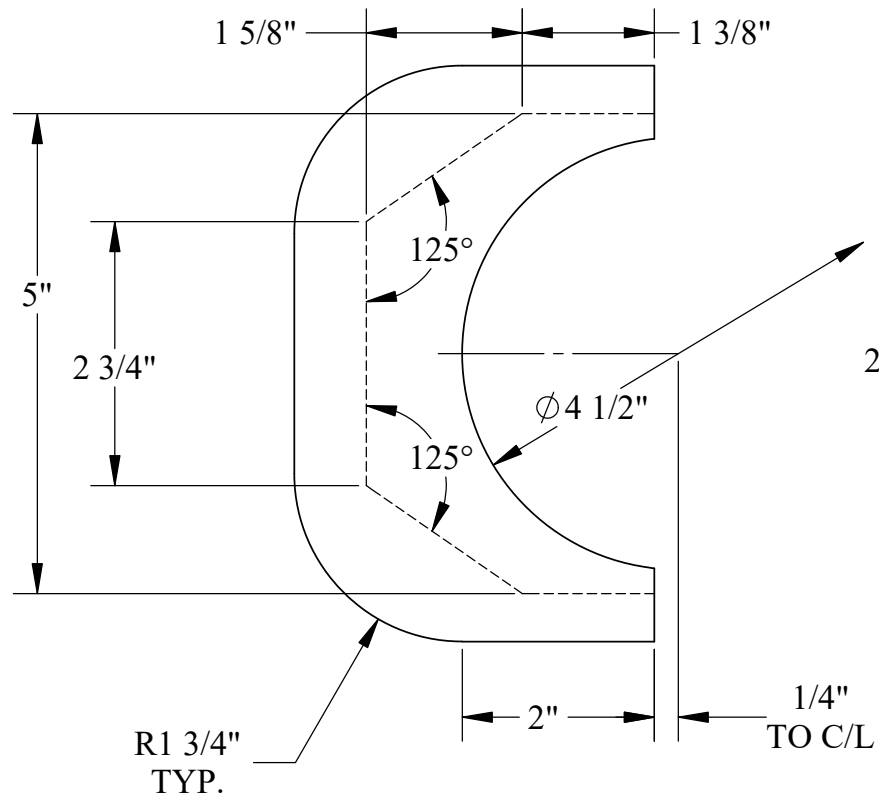
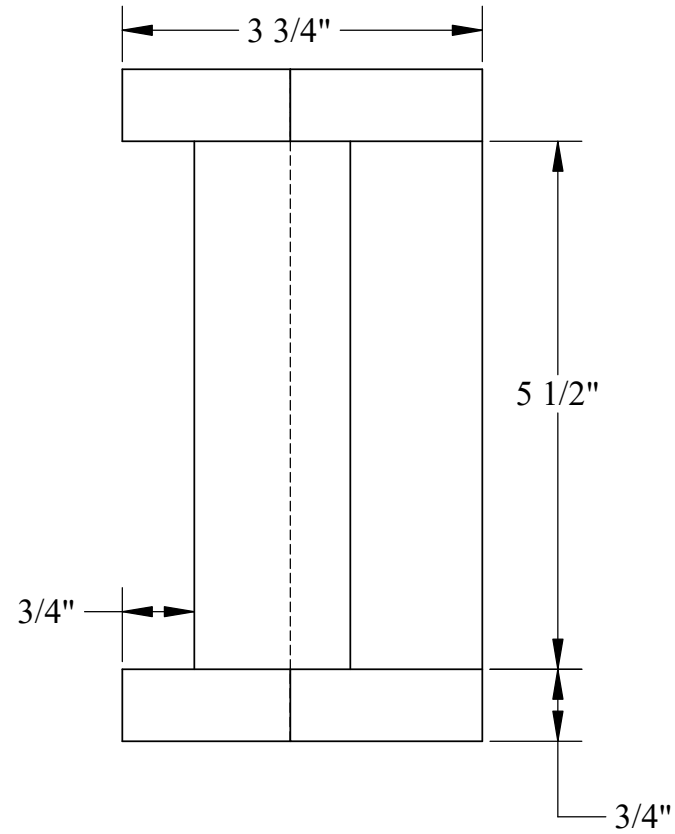
U.S.S. Monitor Steam Engine

Material STEEL	Drawn By - Date RWC 10-2018	Sub-Assembly Piston Rod
Weight (Lbs) 16.78	Piston Rod Cotter	
Scale 1:4		
Part # PR 6		



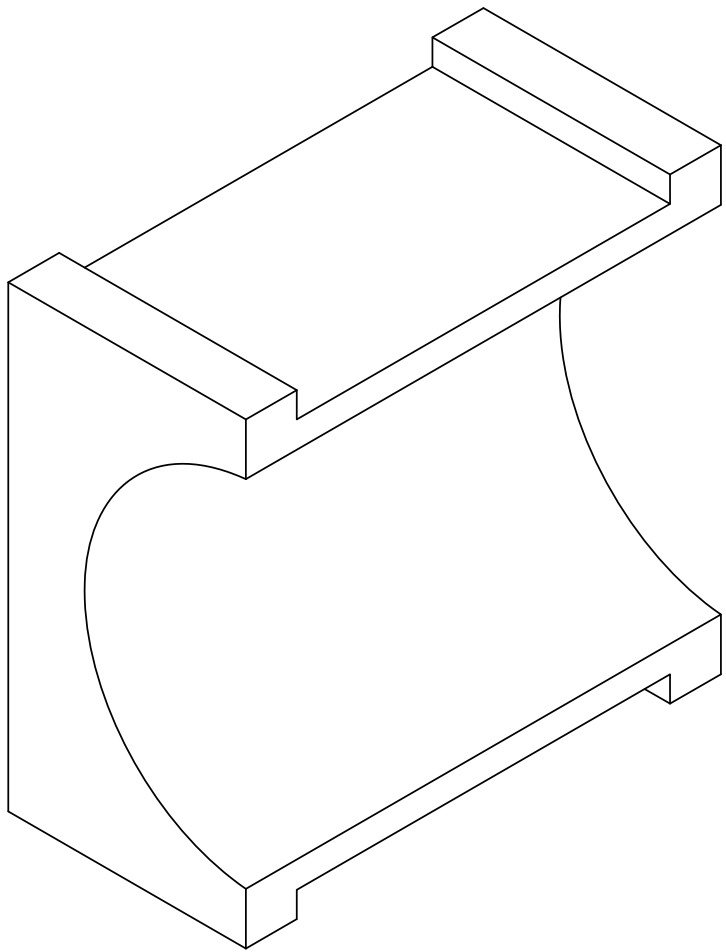
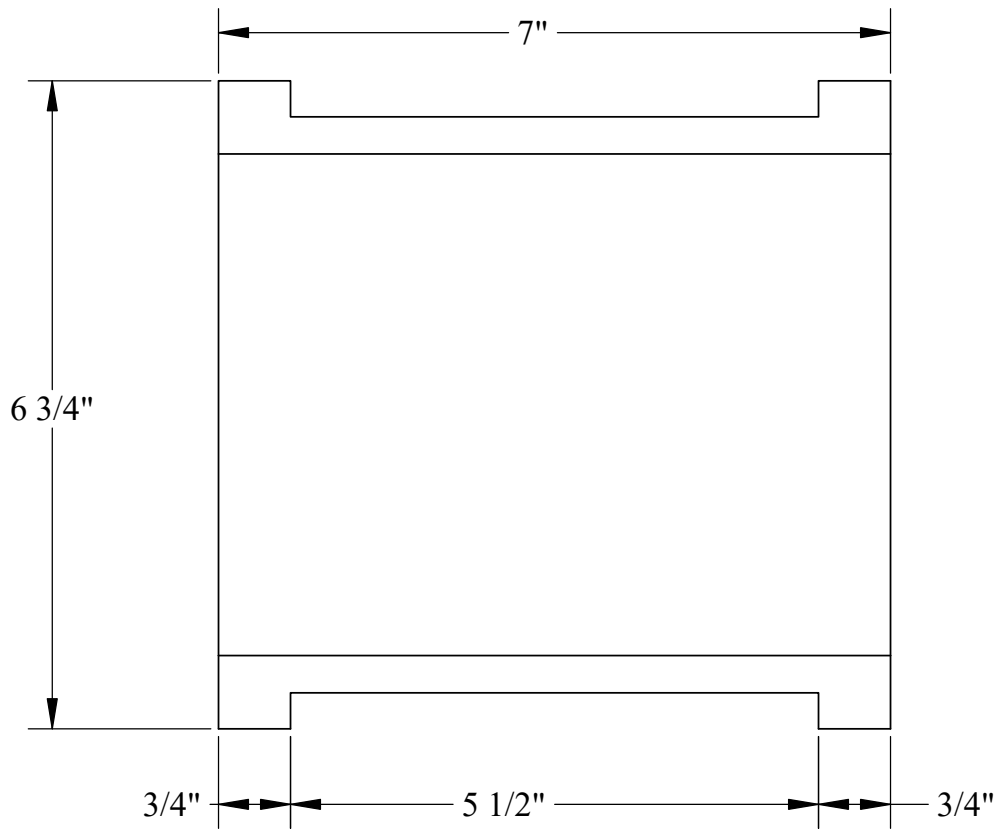
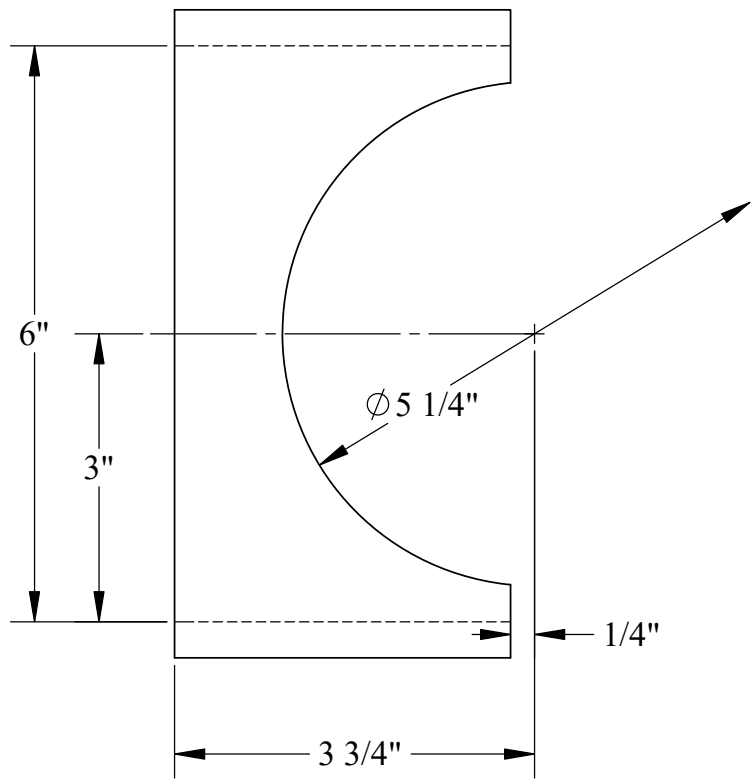
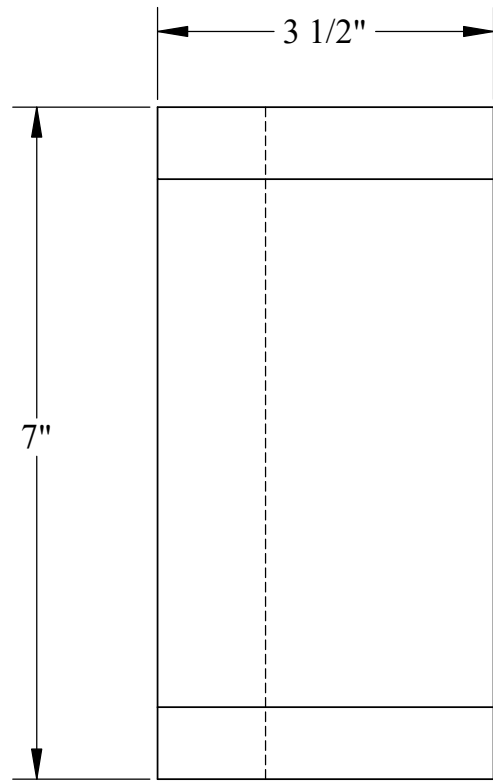
U.S.S. Monitor Steam Engine

Material Brass	Drawn By - Date RWC 10-2018	Sub-Assembly Piston Rod
Weight (Lbs) 27.11	Description Piston Rod Wristpin Bearing-A	
Scale 1:2		
Part # PR 7		



U.S.S. Monitor Steam Engine

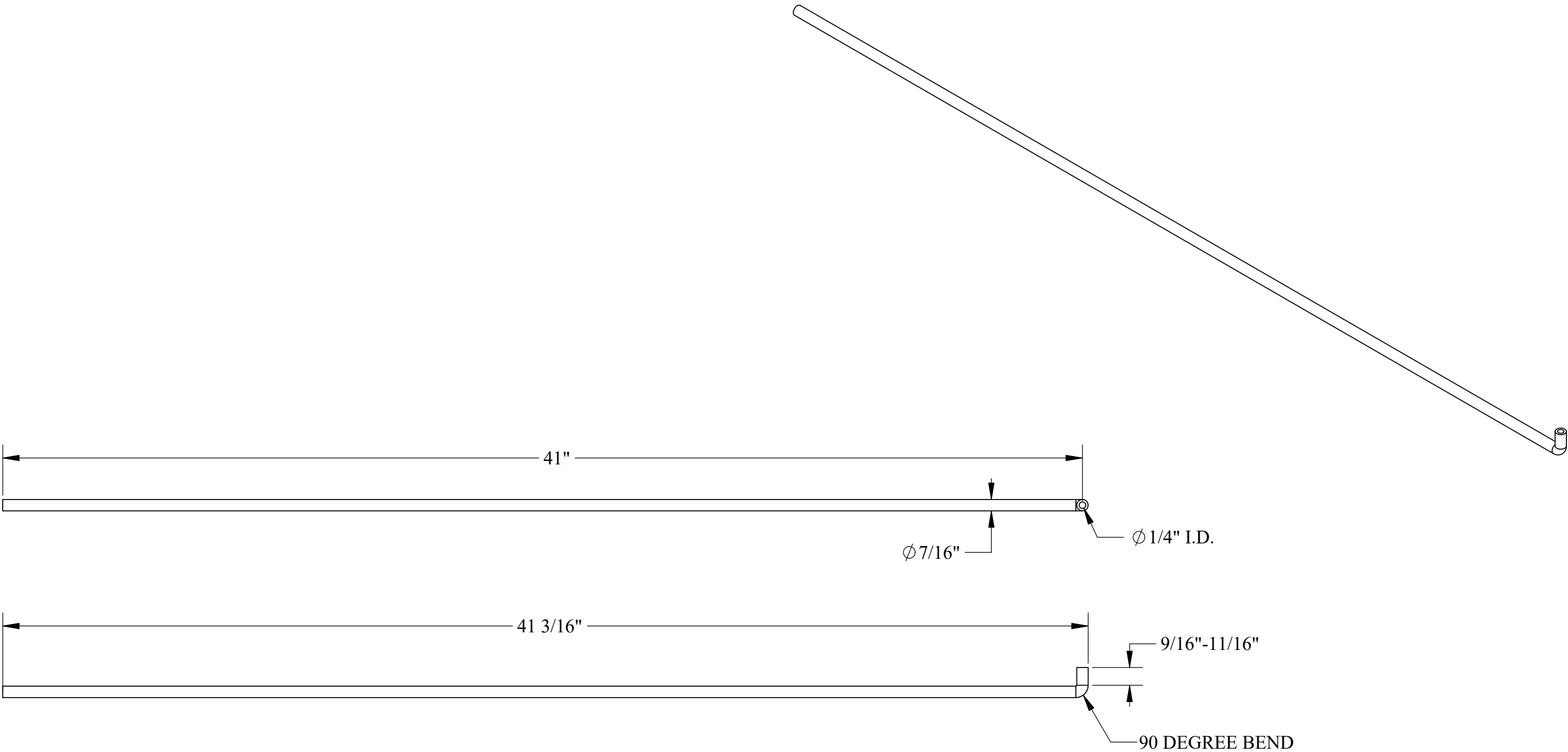
Material Brass	Drawn By - Date RWC 10-2018	Sub-Assembly Piston Rod
Weight (Lbs) 17.32	Piston Rod Wristpin Bearing-B	
Scale 1:2		
Part # PR 8		



5-1/4" BEARING

U.S.S. Monitor Steam Engine

Material Brass	Drawn By - Date RWC 10-2018	Sub-Assembly Piston Rod
Weight (Lbs) 25.90	Description Piston Rod Bearing- Lever End-C	
Scale 1:2		
Part # PR 9		



NOTE:
THIS COULD HAVE
BEEN MADE OF STEEL

U.S.S. Monitor Steam Engine

Material COPPER	Drawn By - Date RWC 10-2018	Sub-Assembly Piston Rod
Weight (Lbs) 1.11	Description Piston Rod Oil Line.	
Scale 1:4		
Part # PR 10		